

# MONTHLY MEMBERSHIP PROGRESS REPORT

District 33 S

Results as of: 5/31/2026

GMT:

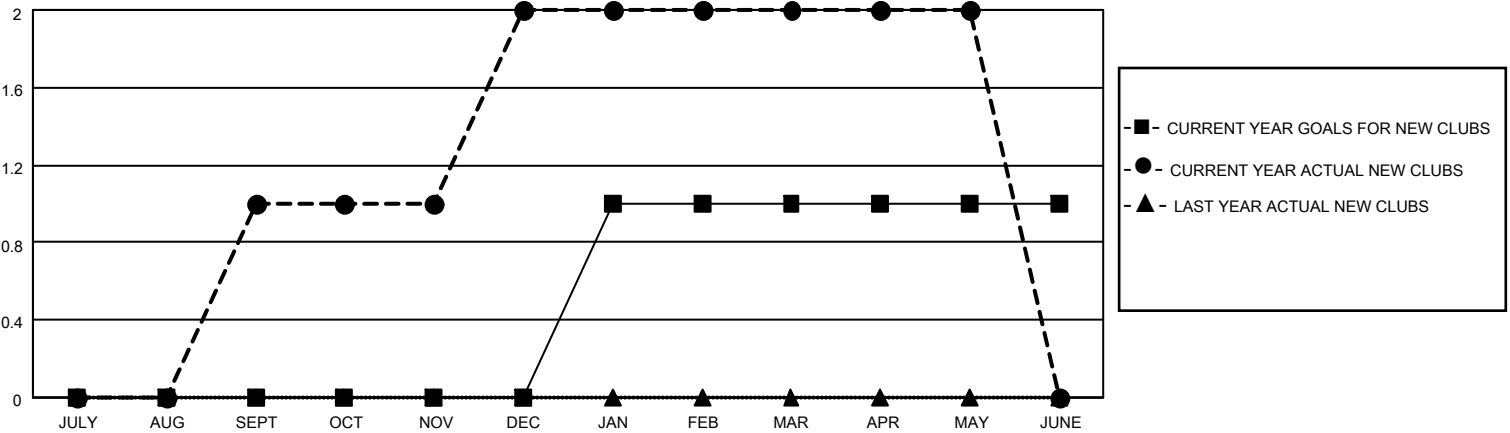
LOCATION MASSACHUSETTS

GMT CA

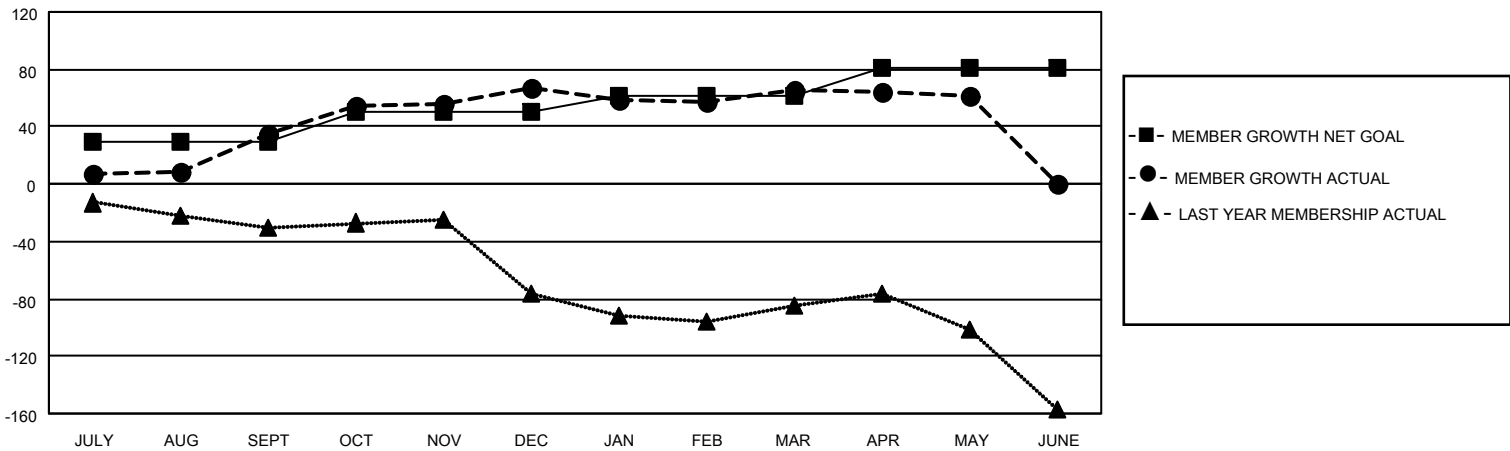
Clubs			
RESULTS FOR 2025-2026			
QUARTER	NEW CLUB GOAL	NEW CLUBS	DROPPED CLUBS
JULY/AUG/SEPT	0	1	0
OCT/NOV/DEC	0	1	0
JAN/FEB/MAR	1	0	0
APR/MAY/JUNE	0	0	1

Members			
RESULTS FOR 2025-2026			
QUARTER	MEMBER GROWTH NET GOAL	MEMBER GROWTH ACTUAL	DROPPED MEMBERS ACTUAL (including transfers)
JULY/AUG/SEPT	30	64	27
OCT/NOV/DEC	20	68	33
JAN/FEB/MAR	11	25	25
APR/MAY/JUNE	20	59	38

GOALS AND ACTUAL NEW CLUBS CUMULATIVE



GOALS AND ACTUAL MEMBERS CUMULATIVE



DROPPED CLUBS: 1	30 CLUBS OF 48 ADDED 1 OR MORE NEW MEMBERS	<b>GENDER DISTRIBUTION</b> MALE 852 (58.08%) FEMALE 613 (41.79%)
<b>DROPPED MEMBERS</b> DECEASED 16 CLUB CANCELLED 0 OTHER 107 TOTAL 123	<a href="#">CLICK HERE FOR CUMULATIVE MEMBERSHIP DATA</a>	TOTAL FAMILY UNIT MEMBERS 229 FAMILY MEMBERS PAYING HALF DUES 116